

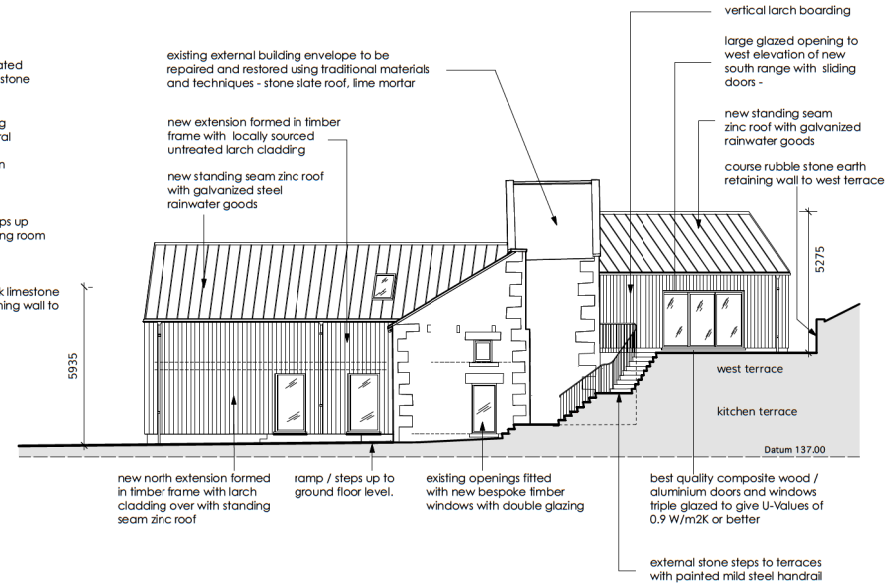
# Appendix 5



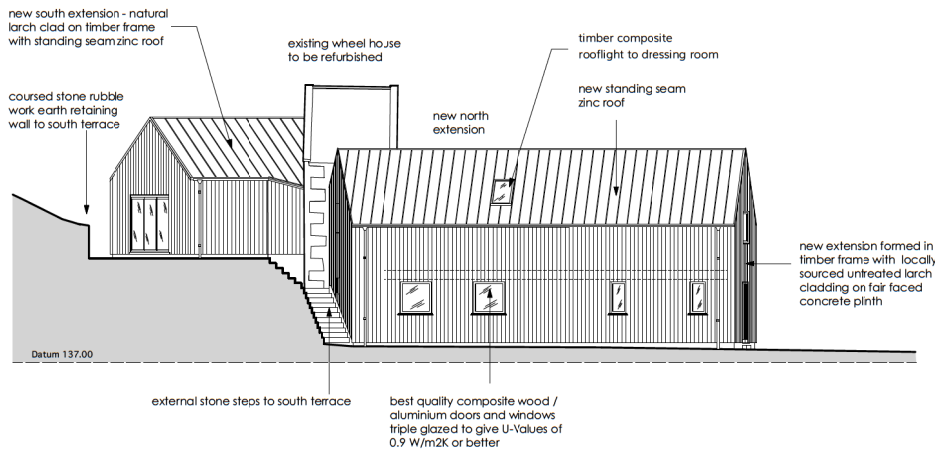
n.b. verify all measurements on site. do not scale from this drawing. use latest revision.



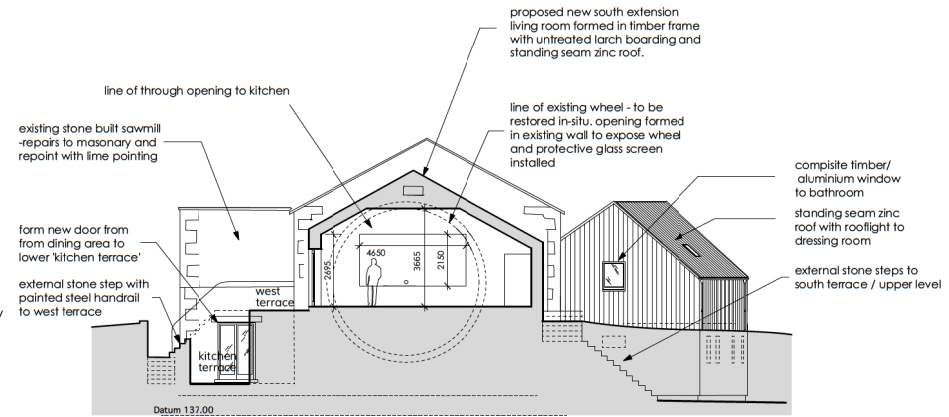
1 NORTH ELEVATION - AS PROPOSED  
Scale: 1:100



2 WEST ELEVATION - AS PROPOSED  
Scale: 1:100



3 EAST ELEVATION - AS PROPOSED  
Scale: 1:100



4 SECTION THRU' PROPOSED SOUTH RANGE  
Scale: 1:100

- Materials:**
- Materials will be ethically sourced and selected on their environmental credentials;
  - All timber will be from FSC certified sustainably managed forests, and where possible grown locally in the UK.
  - Timber cladding from locally sourced untreated larch - using the natural preservatives in the timber to avoid using chemical treatments. Exernal cladding to be finished in Osmo UV-Protection Oil.
  - Insulation - natural sheep's wool insulation / blown fibre cellulose from recycled paper.
  - Standing seam zinc roofing by VMZINC giving a 'Green Guide Summary Rating' (2008) of A+.
  - Triple glazed ultra low U-value windows giving a U-Value of approximately 0.9 W/m2K, or better.

- Water:**
- aim to achieve a use of water no greater than 105l/per person per day. All sanitary ware will be designed to minimize the use of water such as aerated taps and showers and dual flush WCs, flow regulators and the specification of A+ or better rated white goods.
  - The water supply to the property will be from it's own private supply and extracted from a borehole on site. The private water supply does not rely on chemical treatment, and will be fitted with an ultra-violet light unit and media filter to regulate the PH level of the water.
  - It is the intention to install a grey water recycling system - for domestic and garden use.

- Waste:**
- Waste water: This will be treated by a package treatment plant such as the Klargester Biotec, which uses the well-proven aerobic biological process which produces a high grade effluent to be discharged into the water course.
  - Recycling: The proposal incorporates a 'recycling store' which will facilitate the sorting and storage of recyclable materials, which cannot be re-used on site, ready for collection by the LA.
  - Non-recyclable waste storage is provided on site to facilitate collection by the Local Authority.
  - Composting: Garden and appropriate food waste will be composted on site and used as fertilizer on the garden within the site.

Rev B: existing window opening shown 04 04 22  
Rev A: issued for consultation 31 03 22

FRED COLLIN | architect RIBA  
a : Newton Tower  
Hallfield Lane, Newton  
York YO62 7TW  
t : +44 (0) 1439 770318  
m : +44 (0) 7971 882310  
w : www.fredcollin.com  
e : fred@fredcollin.com

job:  
THE OLD SAWMILL  
East Witton

for  
The Clifton & East  
Witton Estate

title:  
PROPOSED  
ELEVATIONS

date:	scale:
Jan 2022	1:100@ A1 1:200@ A3

dwg.no.	rev.
131/ 2.04	B